



# MONTHLY MEMBERSHIP PROGRESS REPORT

District 30 S

Results as of: 4/30/2015

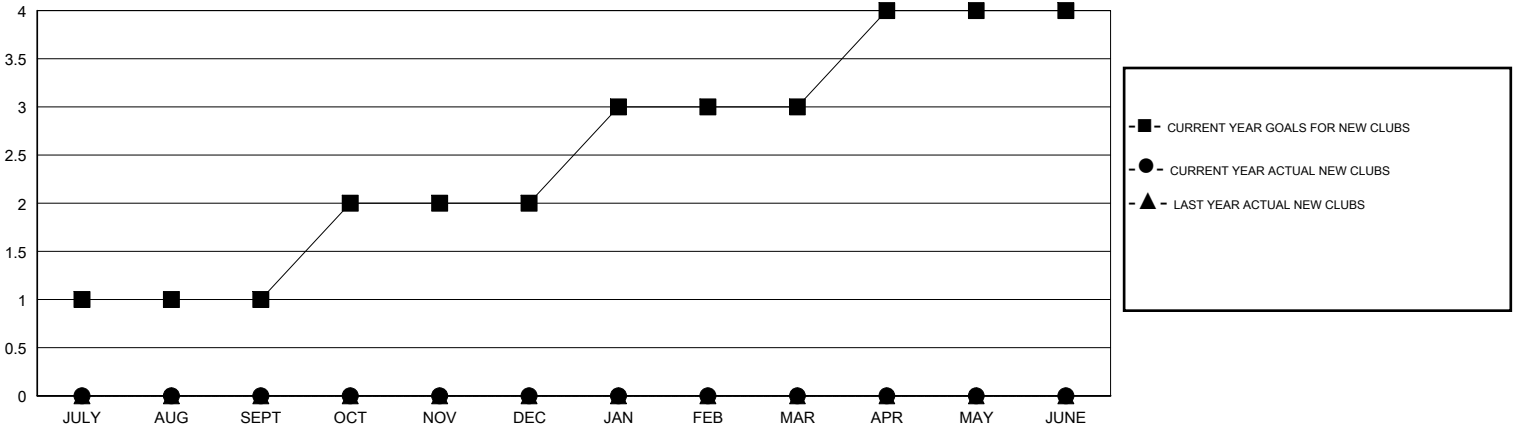
GMT: CARL HARRELL

LOCATION MISSISSIPPI

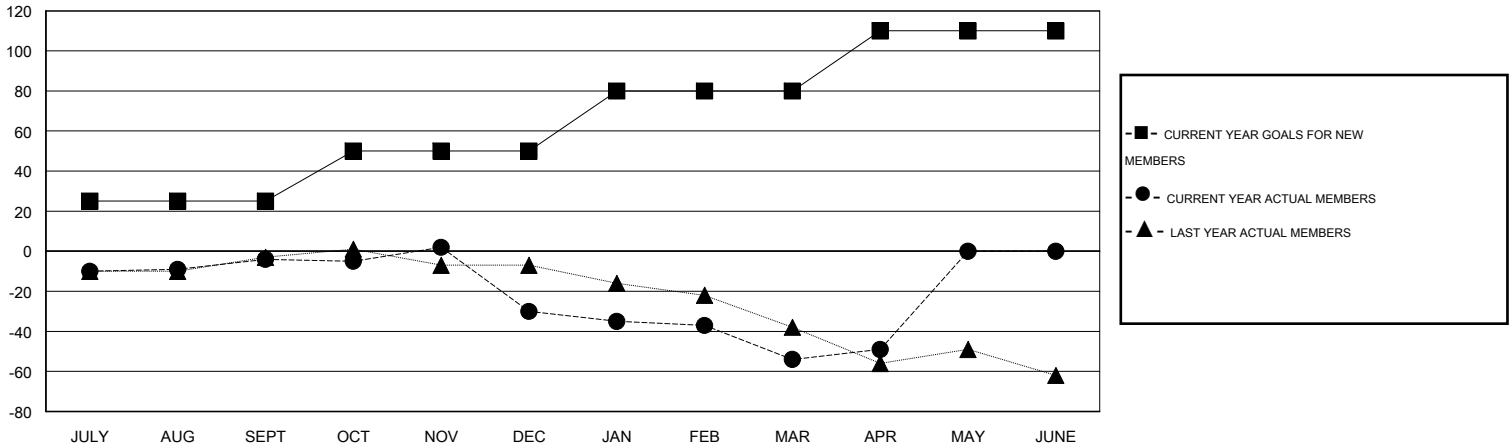
GMT CA 1

Clubs					Members				
RESULTS FOR 2014-2015					RESULTS FOR 2014-2015				
QUARTER	NEW CLUB GOAL	NEW CLUBS	DROPPED CLUBS	NET GAIN/LOSS	QUARTER	NEW MEMBER GOAL	CHARTER AND NEW MEMBERS ADDED	DROPPED MEMBERS	NET GAIN/LOSS
JULY/AUG/SEPT	1	0	0	0	JULY/AUG/SEPT	25	40	44	-4
OCT/NOV/DEC	1	0	2	-2	OCT/NOV/DEC	25	26	52	-26
JAN/FEB/MAR	1	0	0	0	JAN/FEB/MAR	30	40	64	-24
APR/MAY/JUNE	1	0	0	0	APR/MAY/JUNE	30	11	6	5

GOALS AND ACTUAL NEW CLUBS CUMULATIVE



GOALS AND ACTUAL MEMBERS CUMULATIVE



DROPPED CLUBS: 2	32 CLUBS OF 57 ADDED 1 OR MORE NEW MEMBERS	<u>GENDER DISTRIBUTION</u>	
		MALE	932 (71.53%)
<u>DROPPED MEMBERS</u>	<a href="#">CLICK HERE FOR HEALTH ASSESSMENT DATA</a>	FEMALE	371 (28.47%)
DECEASED		14	FAMILY UNIT MEMBERS
CLUB CANCELLED	28	HEAD OF HOUSEHOLD	76
OTHER	124	NON-HEAD OF HOUSEHOLD	81
<b>TOTAL</b>	<b>166</b>		